



# Printer Administration Utility 4.0

## PRINTER ADMINISTRATION UTILITY (PAU) INSTALLATION MANUAL Version 2.2

### Warranty

While every effort has been made to make this document as accurate and helpful as possible, SHARP Corporation makes no warranty of any kind with regard to its content. All information included herein is subject to change without notice. SHARP is not responsible for any loss or damages, direct or indirect, arising from or related to the use of this operation manual.

© Copyright SHARP Corporation 2004. All rights reserved. Reproduction, adaptation or translation without prior written permission is prohibited, except as allowed under copyright laws.

### Trademark Acknowledgments

PAU is a registered trademark of Sharp Corporation.

Microsoft Windows, MS-DOS, and Windows NT are trademarks of Microsoft Corporation in the U.S.A. and other countries.

IBM and PC/AT are trademarks of International Business Machines Corporation.

Pentium is a registered trademark of Intel Corporation.

All other trademarks and copyrights are the property of their respective owners.

### NOTE

Please read the following documents before using Printer Administration Utility. They are found on the installation directory.

[ReadMe] - It describes the latest information about Printer Administration Utility.

[UserGuide] - It describes how to use Printer Administration Utility.

[Online Help System] -After installation, it describes how to use Printer Administration Utility in detail.

# Chapter 1 Introduction

## Overview

Printer Administration Utility (PAU) provides a device administration capability for Sharp Multi Function Peripherals (MFP).

Printer Administration Utility 4.0 is web-based application that runs on a web server. A web browser is the interface mechanism for end-users. Previous versions of Printer Administration Utility were MS Windows applications that did not require a web-browser.

## Required items to use Printer Administration Utility

### Minimum Browser Clients:

- Internet Explorer 6.0 with security set to "medium"
- Netscape 7.0 with javascript and cookies enabled

### Web Server Minimum Requirements:

- Microsoft IIS version 4.0 or 5.0 or 6.0
- Microsoft VBScript 5.0
- Microsoft Windows NT 4.0 Server with Service Pack 6 or
- Windows 2000 Server with Service Pack 2 or
- Windows 2000 Professional with Service Pack 2 or
- Windows XP Professional with Service Pack 1a

### Hardware:

- Pentium III 600MHz
- 256 MB RAM

350 MB of free hard disk space is required Hardware requirements will depend on usage. A large number of MFPs may require additional system resources. If Anti-virus software is running, then the script blocking feature must be turned off.

## Chapter 2 Installing and Uninstalling

Prior to installing PAU, the following steps must be done:

**Step 1. Install Microsoft IIS** (Internet Information Services) version 4.0 (for NT4 only) 5.0, or 6.0.

Microsoft IIS can be installed for free, from the Control Panel using the Add/Remove Windows Components Wizard. Note that it is important to install the latest IIS security updates available from the Microsoft web site after installing IIS. If IIS 6.0 is installed on a system, ensure that the status of the Active Server Pages (under web service extension folder in the IIS Manager) is set to Allowed.

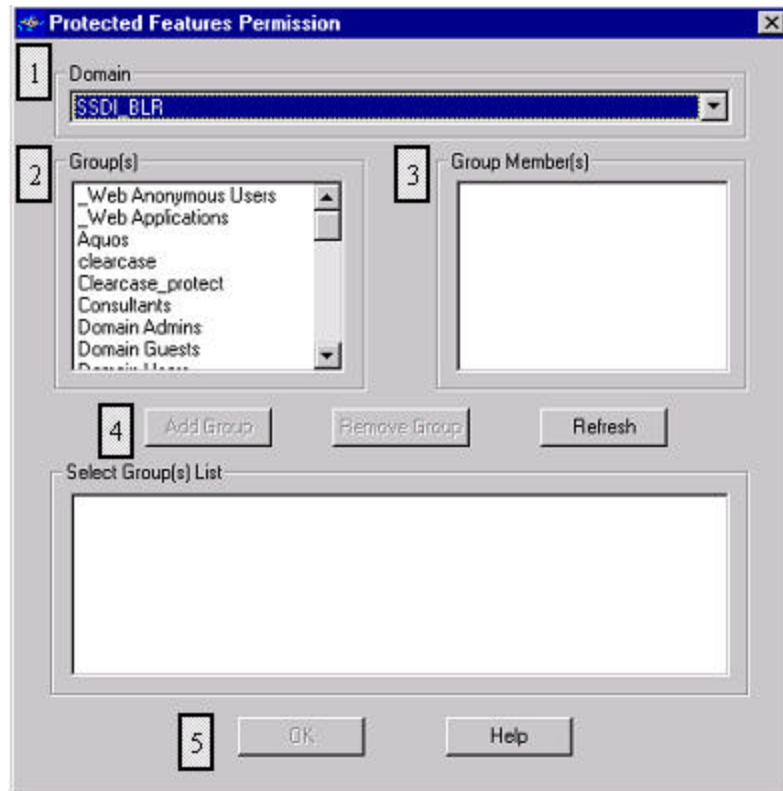
For more details on IIS installation see the various Microsoft Help Pages Under "IIS 6.0 Installation" at Microsoft's web site. You can also use the Windows help system that can be accessed from the Start menu. Search for IIS to see instructions on IIS installation.

**Step 2. Configure Anti-virus software:**

If you are running Anti-virus software with Script blocking enabled on the browser-client PCs, then PAU will not function on the clients.

**Step 3. Identify or Create a Windows Security Group:**

Create or identify a Windows security group that will have access to Printer Administration Utility protected features. Some features of Printer Administration Utility allow users to modify system settings in ways that might impact other users of Printer Administration Utility. These features are called protected features. At installation time, one or more MS Windows security groups are configured to have access to Printer Administration Utility protected features. Only users who are members of the selected groups will be able to use protected features.



### 1. Domain

This List Box contains the names of the domains currently available. Usually this will be the name of the computer (local domain) and the name of the domain that the computer is a member of. Typically the group used for PAU protected features will be a domain group so selecting the domain name will be the most useful choice.

### 2. Group Names

This list contains the names of the groups that are available in the domain that is currently selected.

### 3. Group Members

When you click on the name of a group, this list contains the usernames of the members of that group. This allows you to see which users will get access to PAU protected features based on the group currently selected.

### 4. Add Groups Button

This will add the currently selected group(s) to the groups that have access to PAU protected features.

### 5. OK Button

This button is disabled until at least one group has been selected. When the OK button is clicked the users who are members of the groups that appear in the Selected Groups box will have access to PAU protected features.

## **Windows Firewall (XP Service Pack 2)**

Windows Firewall provides a warning message when invoking Printer Administration Utility from the Start menu. The warning message does not impact normal operations. The warning can be acknowledged and then Printer Administration Utility will start. To avoid the Windows Firewall warning message when invoking PAU, you can create a shortcut on the desktop or in the favorites folder of Internet Explorer.

## **To install from the Printer Administration Utility CD-ROM:**

To install PAU from a CD-ROM, the installation file must be downloaded from the support website, uncompressed, and then copied to the CD-ROM. All of the files and subdirectory structures that are created by uncompressing the downloaded file must be copied to the CD-ROM without changing file names or relative paths.

After completing the pre-installation steps listed above, insert the CD-ROM and follow the installation prompts. Inserting the CD-ROM into the drive will automatically start the installation program. All other applications should be closed before installing Printer Administration Utility.

Installing Printer Administration Utility will often require a restart of the computer. This will depend on the operating system, and what components have been previously installed. Do not install PAU 4.0 on servers that cannot be restarted or choose an installation time when a restart does not effect normal operations

### **Installation Notes**

#### **Software Location**

By default, the Printer Administration Utility software is installed on your default boot drive (usually C:\) in a folder named "C:\Program Files\Sharp\DSMC" unless you specify another drive and/or folder during installation. To start Printer Administration Utility from the server on which it has been installed, use the PAU shortcut installed on the Start->Programs->Printer Administration Utility menu. To access Printer Administration Utility remotely, use the URL of the web server followed by the location of the main web page of the Printer Administration Utility application.

For example; <http://192.168.1.102/PAU>

PAU 4.0 Installs the following components as part of PAU Installation.

1. MICROSOFT SQL SERVER 2000 DESKTOP ENGINE ("MSDE") SERVICE PACK 3. This component will install two NT Services with the name MSSQL\$DSMC and MSSQLServerADHelper.
2. MSXML ver 3.0 (This is used to parse XML files.)
3. Copies MSVCRT.dll and MSVCP60.Dll into windows system directory (These are only copied if the system does not already contain them.)
4. Copies the Active Delivery ver 3.0 DLLs into <PAU Target Location>\DSMC\Bin (A tool to create the Self-Extracting EXE file)
5. Copies the Dynazip ver 5.00.01 DLLs into <PAU Target Location>\DSMC\Bin ( A tool to create the zip file)
6. SNMPTRAP NT Service to listen for SNMP traps from the MFPs.
7. Installs PAUService NT Service to perform background tasks for Printer Administration

Utility.

During Installation Printer Administration Utility will perform a discovery of the printers that are available on the network. Only printers visible on the same subnet as the server on which PAU is installed will be found.

This discovery process may take some time to complete depending on the number of devices found. The "Last Device Discovery" time will display the message "In Progress" while this process is running in the background. PAU features can be used during this time but not all devices will be visible. Discovery configuration cannot be changed without stopping the discovery.

### **Online Help**

The online help provides information and instructions for performing Printer Administration Utility tasks. You can access the online help while using Printer Administration Utility by clicking the 'Help' link found on the main screen.

### **FAT and NTFS file systems**

Printer Administration Utility supports either of the Microsoft file system types. SHARP recommends that the NTFS file system be used in order to provide the most robust system performance and strongest security. When using FAT file system you will be prompted for your windows login ID and password when you access a protected feature. Once you are logged in, you will be able to access protected features. If you are using NTFS file system your current login session is checked, and no password prompt appears when accessing protected features.

## **Uninstalling Printer Administration Utility:**

To Uninstall Printer Administration Utility, please follow the Windows procedure for uninstalling software.

1. Click the Windows Start button, then the Settings and Control Panel menus.
2. Select Add/Remove Programs icon.
3. Follow the directions to remove Printer Administration Utility.

Uninstalling Printer Administration Utility will require a restart of the computer to finish the uninstallation process.

## **Upgrading Printer Administration Utility:**

To upgrade to a newer version of Printer Administration Utility (higher than version 4.0) without losing current configurations and device data, please follow the normal installation process and specify the upgrade installation option. Upgrades from previous versions of PAU, to PAU 4.0 are not supported.